



MODEL
D100V

KEL-BERG 3-AXLE CABINET
TRAILER WITH OPENING DOORS

SPECIFICATION FOR D100V

KEL-BERG 3-AXLE CABINET TRAILER WITH OPENING DOORS

WEIGHTS & DIMENSIONS:

Total length	13,620 mm
Front overhang	1,660 mm
Coupling height	1,120 mm
King-pin - support legs	2,595 mm
Width	2,600 mm
Total height	4,000 mm
Load height	1,250 mm
King-pin - 2nd axis	8,130 mm
Wheelbase	1,410 mm

Length inside	13,290 mm
Internal width	2,490 mm
Interior height	2,270 mm
Load height from the side	2,650 mm

Speed	90 km/h
King-pin - print	18,000 kg
Rear axle load	27,000 kg
Tare weight	7,660 kg
Total weight	45,000 kg

CHASSIS:

Made of heavy duty main frame, welded steel construction.



SPECIFICATION FOR D100V

KEL-BERG 3-AXLE CABINET TRAILER WITH OPENING DOORS

CABINET:

- Heavy-duty, welded steel construction with strong crossbeams.
- Edging made of bent sheet steel
- 28 mm bottom
- Lashing rails 900 mm height
- Sandwich profile rear doors
- Doors left side with centre post from Combi system

AXLES:

- 3 x 9 tonne SAF axles with disc brakes
- Air suspension with level valve operating length 200 mm (-70/+130mm)
- 1st axle liftable - automatic
- With ABS, EBS

WHEELS:

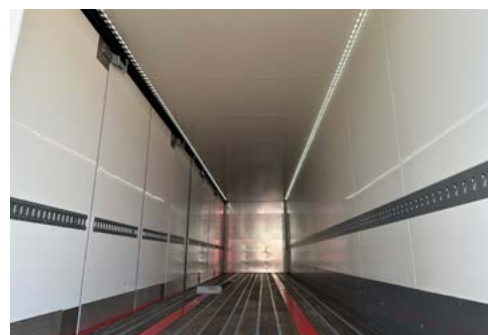
- 6 x 385 / 65 R22.5 mounted on steel rim with M+S tyres

BRAKES:

- 2-circuit compressed air system with EBS with ABS,
- Spring brake bells for parking brake
- Air clutch red/yellow - EU Model

ELECTRICAL SYSTEM:

- 24 Volts according to current regulations
- 2 x 2 multi-chamber rear LED lamps
- Side/position lights of diode type
- 2 LED rear lights on the side
- Light loops inside the cabinet



ELECTRICAL CONNECTORS:

- 14-pole VBG
- ABS / EBS connector on front frame

PAINTING:

- 3-layer base coat with zinc primer
- 2-component surface coating
- Chassis colour: RAL 9005 Jet Black
- Cabinet colour: RAL 9010 White

OTHER:

- Red/white reflective plates(ECE70) rear
- Red and white reflective (ECE104) contour marking on sides and rear
- Mudguards with anti-spray
- 1 Stainless steel tool box - 1000 x 500 mm
- Includes lashing loops at the bottom.

OPTIONS:

- Battery pack, transmitter & receiver incl remote, extra costs